

922850mN

922600mN

922350mN

922100mN

921850mN

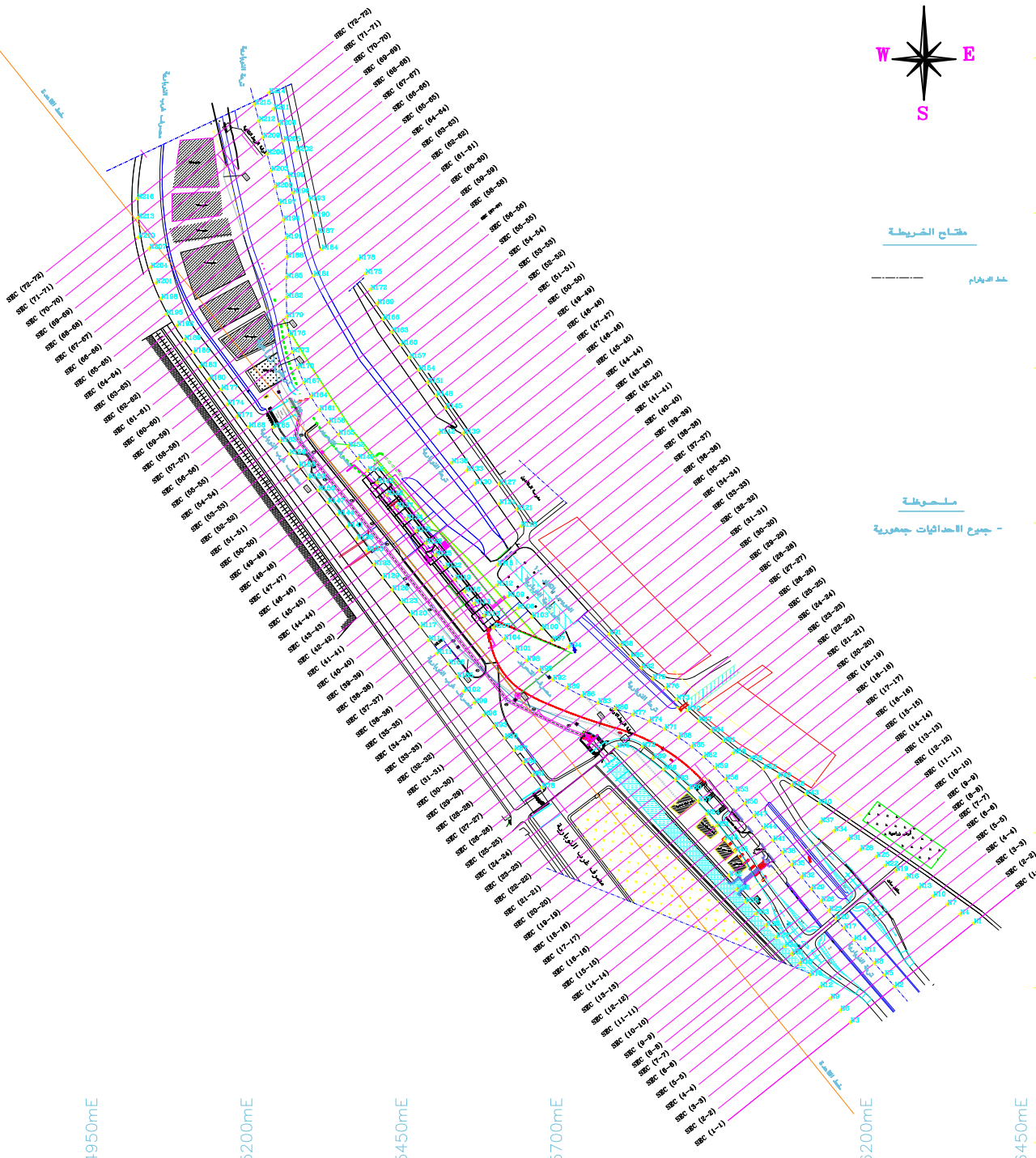
921600mN

921350mN

921100mN

Point	Easting	Northing	No
N1	506374.970	921454.207	
N2	506245.993	921551.629	SBC (1-1)
N3	506175.434	921294.217	
N4	506353.691	921499.893	
N5	506230.505	921970.532	SBC (2-2)
N6	506159.307	921313.390	
N7	506321.994	921494.139	
N8	506211.115	921939.435	SBC (3-3)
N9	506143.990	921332.611	
N10	506309.144	921497.950	
N11	506197.730	921408.358	SBC (4-4)
N12	506138.893	921351.369	
N13	506395.349	921511.904	
N14	506181.342	921427.241	SBC (5-5)
N15	506110.105	921370.007	
N16	506395.871	921527.061	
N17	506164.955	921445.144	SBC (6-6)
N18	506094.044	921389.173	
N19	506349.512	921538.534	
N20	506310.544	921441.996	SBC (7-7)
N21	506080.898	921404.269	
N22	506231.538	921547.094	SBC (8-8)
N23	506140.969	921474.377	
N24	506095.399	921416.721	
N25	506217.278	921581.293	
N26	506139.309	921499.813	SBC (9-9)
N27	506055.503	921431.320	
N28	506191.227	921725.432	
N29	506112.495	921500.169	SBC (10-10)
N30	506039.337	921450.400	
N31	506172.334	921589.323	
N32	506099.692	921539.526	SBC (11-11)
N33	506023.968	921469.319	
N34	506149.145	921602.761	
N35	506031.944	921547.896	SBC (12-12)
N36	506008.490	921486.149	
N37	506137.344	921617.314	
N38	506053.740	921500.298	SBC (13-13)
N39	505991.834	921506.443	
N40	506134.413	921647.089	
N41	506050.547	921530.520	SBC (14-14)
N42	505979.397	921530.520	
N43	506102.840	921681.773	
N44	506035.349	921607.241	SBC (15-15)
N45	505995.205	921670.470	
N46	506090.760	921678.103	
N47	506023.143	921627.399	SBC (16-16)
N48	505972.815	921680.373	
N49	506058.290	921690.112	
N50	506035.124	921647.397	SBC (17-17)
N51	505990.162	921611.274	
N52	506036.073	921703.527	
N53	506098.799	921644.044	SBC (18-18)
N54	505943.765	921630.161	
N55	506012.278	921717.291	
N56	506097.764	921702.363	SBC (19-19)
N57	505929.747	921650.978	
N58	506095.918	921728.172	
N59	506097.033	921704.967	SBC (20-20)
N60	506111.111	921670.498	
N61	505995.819	921747.309	
N62	506038.918	921728.480	SBC (21-21)
N63	506093.090	921685.044	
N64	505950.190	921763.599	
N65	506019.338	921738.811	SBC (22-22)
N66	506072.947	921702.363	
N67	505930.822	921780.116	
N68	506048.197	921763.905	SBC (23-23)
N69	506096.767	921729.818	
N70	505981.393	921797.370	
N71	506075.427	921787.979	SBC (24-24)
N72	506031.607	921737.923	
N73	505984.721	921813.250	
N74	506095.869	921780.018	SBC (25-25)
N75	506094.474	921727.923	
N76	506077.866	921833.777	
N77	506094.310	921790.763	SBC (26-26)
N78	506077.654	921822.802	
N79	506055.242	921846.473	
N80	506079.697	921799.830	SBC (27-27)
N81	506092.300	921863.653	
N82	506037.853	921865.785	
N83	506078.058	921809.894	SBC (28-28)
N84	506047.481	921801.293	
N85	506020.558	921883.041	
N86	506042.174	921830.987	SBC (29-29)
N87	506032.973	921829.818	
N88	506093.558	921902.354	
N89	506071.889	921833.509	SBC (30-30)
N90	506017.434	921759.358	
N91	506078.029	921920.339	
N92	506095.011	921847.213	SBC (31-31)
N93	506060.283	921771.091	
N94	506070.638	921899.970	
N95	506073.502	921862.002	SBC (32-32)
N96	506093.477	921789.797	
N97	506093.960	921910.274	
N98	506053.270	921877.817	SBC (33-33)
N99	506058.415	921829.544	
N100	506077.430	921929.298	
N101	506034.291	921894.614	SBC (34-34)
N102	506051.812	921928.131	
N103	506091.145	921949.391	
N104	506061.439	921912.363	SBC (35-35)
N105	506040.451	921951.314	
N106	506038.974	921963.217	
N107	506099.777	921931.046	SBC (36-36)
N108	506058.531	921879.199	

Point	Easting	Northing	No
N109	506022.439	921981.315	
N110	506054.044	921950.476	SBC (37-37)
N111	506097.979	921999.279	
N112	506064.871	921999.277	
N113	506058.983	921949.982	SBC (38-38)
N114	506094.733	921910.790	
N115	506005.735	922032.040	
N116	506052.721	921989.448	SBC (39-39)
N117	506049.845	921992.244	
N118	506043.762	922004.861	
N119	506037.060	922008.936	SBC (40-40)
N120	506045.424	921971.383	
N121	506037.150	922121.418	
N122	506031.399	922028.421	SBC (41-41)
N123	506045.974	921991.770	
N124	506008.783	922130.897	
N125	506005.737	922047.907	SBC (42-42)
N126	506045.974	921991.770	
N127	506008.497	922162.536	
N128	506040.078	922067.384	SBC (43-43)
N129	506040.905	922011.807	
N130	506009.300	922163.118	
N131	506074.414	922098.890	SBC (44-44)
N132	506008.958	922032.442	
N133	506056.037	922164.327	
N134	506058.763	922106.166	SBC (45-45)
N135	506094.974	922095.129	
N136	506031.395	922197.015	
N137	506043.091	922135.853	SBC (46-46)
N138	506018.533	922073.989	
N139	506050.318	922244.472	
N140	506047.430	922145.339	SBC (47-47)
N141	506033.985	922080.968	
N142	506030.998	922244.524	
N143	506011.786	922164.826	SBC (48-48)
N144	506048.039	922113.690	
N145	506052.309	922098.739	
N146	506039.152	922184.348	SBC (49-49)
N147	506032.196	922132.960	
N148	506007.119	922005.973	
N149	506030.494	922203.837	SBC (50-50)
N150	506016.993	922152.611	
N151	506093.998	922038.208	
N152	506044.830	922232.328	
N153	506031.029	922172.046	SBC (51-51)
N154	506047.763	922148.927	
N155	506049.178	922242.810	
N156	506058.128	922191.255	SBC (52-52)
N157	506043.709	922048.094	
N158	506033.830	922282.305	SBC (53-53)
N159	506070.106	922211.267	
N160	506043.111	922098.078	
N161	506018.470	922282.282	SBC (54-54)
N162	506055.115	922231.282	
N163	506045.952	922048.227	
N164	506005.045	922303.566	SBC (55-55)
N165	506043.750	922254.330	
N166	506043.172	922048.227	
N167	506030.309	922326.208	SBC (56-56)
N168	506004.628	922254.878	
N169	506012.041	922316.941	
N170	506033.350	922350.274	SBC (57-57)
N171	506015.352	922271.540	
N172	506040.288	922316.941	
N173	506075.311	922376.894	SBC (58-58)
N174	506070.112	922291.365	
N175	506092.814	922368.437	SBC (59-59)
N176	506099.408	922403.210	
N177	506060.204	922315.474	
N178	506031.815	922325.589	SBC (60-60)
N179	506095.994	922432.513	
N180	506040.479	922331.896	
N181	506039.197	922499.308	SBC (61-61)
N182	506095.298	922493.997	
N183	506028.195	922322.289	
N184	506031.954	922541.634	SBC (62-62)
N185	506093.199	922495.978	
N186	506015.180	922376.908	
N187	506016.454	922698.481	SBC (63-63)
N188	506098.097	922326.803	
N189	506010.830	922395.892	
N190	506058.588	922594.727	SBC (64-64)
N191	506094.793	922599.778	
N192	506098.738	922416.401	
N193	506030.935	922690.954	SBC (65-65)
N194	506093.939	922598.497	
N195	506071.497	922436.820	
N196	506075.897	922632.899	SBC (66-66)
N197	506044.143	922619.430	
N198	506093.228	922482.044	
N199	506097.892	922658.545	SBC (67-67)
N200	506074.434	922442.109	
N201	506094.880	922487.261	
N202	506090.391	922700.648	SBC (68-68)
N203	506093.753	922685.798	
N204	506048.140	922612.455	
N205	506090.457	922716.970	SBC (69-69)
N206	506024.019	922695.497	
N207	506043.993	922542.773	
N208	506053.187	922748.938	SBC (70-70)
N209	506037.907	922732.148	
N210	506028.388	922560.723	
N211	506044.449	922767.998	SBC (71-71)
N212	506030.998	922748.805	
N213	506025.312	922591.928	
N214	506037.129	922794.173	SBC (72-72)
N215	506013.989	922775.004	
N216	506024.908	922823.992	



مطابق الخريطة

خط التبرام

ملحوظة

- جميع الاحداثيات جغورية

504200mE

504450mE

504700mE

504950mE

505200mE

505450mE

505700mE

506200mE

506450mE